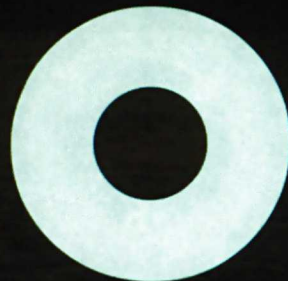


No. : 11 Megantaka
Isi : 60 lembar
NB 2507

28

elopia
baru



Nc 10
Greguritan Megantaka

PERPUSTAKAAN NASIONAL RI

PERPUSTAKAAN NASIONAL RI

Tanggal : 24 / 09 / 2019
Item ID : 00002461887
No Induk : 201901203093128
BIB-ID : 0710-0717002851
Ref/Induk : ERWIN DIANI ACHMIDI

Handwritten text on a palm leaf strip, likely a list of names or titles in an ancient script. The text is arranged in two columns, with approximately 10-12 entries per column. The script is finely etched into the surface of the dried leaf.

Handwritten text on a second palm leaf strip, continuing the list or providing additional details. Like the first strip, it features two columns of text in an ancient script, with two circular holes visible for binding.

Handwritten text in an ancient script, likely Pāli, on a palm leaf. The text is arranged in approximately four horizontal lines. The script is finely etched into the surface of the leaf.

Handwritten text in an ancient script, likely Pāli, on a palm leaf. The text is arranged in approximately four horizontal lines. The script is finely etched into the surface of the leaf.

Handwritten text in an ancient script, likely Pāli, on a palm leaf. The text is arranged in approximately four horizontal lines. The script is finely etched into the surface of the leaf.

Handwritten text in an ancient script, likely Pāli, on a palm leaf. The text is arranged in approximately four horizontal lines. The script is finely etched into the surface of the leaf.

Handwritten text on a palm leaf strip, consisting of two columns of script. The script is a form of South Indian writing, likely Grantha or Tamil. The leaf shows signs of age and wear, with two circular holes for binding. The text is densely packed and spans the length of the strip.

Handwritten text on a second palm leaf strip, also consisting of two columns of script. Similar to the first strip, it features a form of South Indian writing. The leaf is aged and has two circular holes. The text is continuous across the length of the strip.

Handwritten text in an ancient script, likely Pahlavi, on a palm-leaf fragment. The text is arranged in approximately four horizontal lines. The script is finely etched into the surface of the leaf. There are two circular holes on the left side, which were used for threading a cord to bind multiple leaves together into a book format.

Handwritten text in an ancient script, likely Pahlavi, on a palm-leaf fragment. The text is arranged in approximately four horizontal lines. The script is finely etched into the surface of the leaf. There are two circular holes on the right side, which were used for threading a cord to bind multiple leaves together into a book format.

Handwritten text in an ancient script, likely Pahlavi, on a palm-leaf fragment. The text is arranged in approximately four horizontal lines. The script is finely etched into the surface of the leaf. There are two circular holes on the left side, which were used for threading a cord to bind multiple leaves together into a book format.

Handwritten text in an ancient script, likely Pahlavi, on a palm-leaf fragment. The text is arranged in approximately four horizontal lines. The script is finely etched into the surface of the leaf. There are two circular holes on the right side, which were used for threading a cord to bind multiple leaves together into a book format.

Handwritten text on a long, narrow strip of aged paper, likely a document fragment. The text is written in a cursive script and is mostly illegible due to fading and the angle of the strip. There are two circular holes punched through the strip, one near each end.

Handwritten text on a second long, narrow strip of aged paper, similar to the one above. The text is also in a cursive script and is largely illegible. Two circular holes are punched through this strip as well, one near each end.

Handwritten text on a palm leaf strip, consisting of two columns of script. The script is a form of South Indian writing, likely Grantha or Tamil. The leaf has two circular holes for binding.

Handwritten text on a second palm leaf strip, also consisting of two columns of script. This strip also features two circular holes for binding.

Handwritten text on a palm leaf strip, consisting of two columns of script. The script is a form of South Indian Tamil. The strip has two circular holes, one on each side, used for binding multiple leaves together. The text is densely packed and appears to be a continuous passage.

Handwritten text on a second palm leaf strip, also consisting of two columns of script. This strip also features two circular holes for binding. The script is consistent with the first strip, representing a continuation of the text. The leaf shows signs of age and wear, with some fraying at the edges.

Handwritten text on a long, narrow strip of aged paper, possibly a document or letter. The text is written in a cursive script and is mostly illegible due to fading and damage. There are two circular holes punched through the strip, one near the left end and one near the right end. The paper is yellowed and shows signs of wear, including a small tear near the center.

Handwritten text on a long, narrow strip of aged paper, similar to the one above. The text is written in a cursive script and is mostly illegible due to fading and damage. There are two circular holes punched through the strip, one near the left end and one near the right end. The paper is yellowed and shows signs of wear, including a small tear near the center.

Handwritten text in an ancient script, possibly Pahlavi, on a long, narrow strip of parchment. The text is arranged in two columns, with a central vertical crease. There are four circular holes, two on each side, which were used for binding multiple strips together. The script is finely inscribed and appears to be a form of administrative or legal record.

Handwritten text in an ancient script, possibly Pahlavi, on a long, narrow strip of parchment. The text is arranged in two columns, with a central vertical crease. There are four circular holes, two on each side, which were used for binding multiple strips together. The script is finely inscribed and appears to be a form of administrative or legal record.

Handwritten text on a long, narrow strip of aged paper, likely a manuscript or document. The text is written in a cursive script, possibly a historical form of a European language. The strip has two circular holes punched through it, suggesting it was part of a bound volume or a chain of documents. The paper is yellowed and shows signs of wear and tear.

Handwritten text on a long, narrow strip of aged paper, similar to the one above. The text is written in a cursive script, possibly a historical form of a European language. The strip has two circular holes punched through it, suggesting it was part of a bound volume or a chain of documents. The paper is yellowed and shows signs of wear and tear.

Handwritten text on a long, narrow strip of aged paper, possibly a manuscript or record. The text is written in a cursive script, likely a historical form of a South Asian language. The strip is folded in the middle, and there are two circular holes on each side, suggesting it was part of a bound volume or a scroll. The paper is yellowed and shows signs of wear.

Handwritten text on a long, narrow strip of aged paper, similar to the one above. The text is written in a cursive script. The strip is also folded in the middle and has two circular holes on each side. The paper is yellowed and shows signs of wear.

Handwritten text on a long, narrow strip of aged paper, likely a palm leaf manuscript. The text is written in a cursive script, possibly Burmese or Thai. The strip has two circular holes punched through it, one on the left and one on the right. The paper is yellowed and shows signs of wear and tear.

Handwritten text on a second long, narrow strip of aged paper, similar to the first. The text is written in the same cursive script. This strip also has two circular holes punched through it, one on the left and one on the right. The paper is yellowed and shows signs of wear and tear.

Handwritten text in an ancient script, likely Pahlavi, on a palm-leaf manuscript strip. The text is arranged in approximately four horizontal lines. Two circular holes are visible on the left side of the strip, used for binding multiple leaves together.

Handwritten text in an ancient script, likely Pahlavi, on a palm-leaf manuscript strip. The text is arranged in approximately four horizontal lines. Two circular holes are visible on the right side of the strip, used for binding multiple leaves together.

Handwritten text in an ancient script, likely Pahlavi, on a palm-leaf manuscript strip. The text is arranged in approximately four horizontal lines. Two circular holes are visible on the left side of the strip, used for binding multiple leaves together.

Handwritten text in an ancient script, likely Pahlavi, on a palm-leaf manuscript strip. The text is arranged in approximately four horizontal lines. Two circular holes are visible on the right side of the strip, used for binding multiple leaves together.

Handwritten text in an ancient script, likely Pāli, on a palm leaf. The text is arranged in approximately four horizontal lines. The leaf shows signs of age and wear.

Handwritten text in an ancient script, likely Pāli, on a palm leaf. The text is arranged in approximately four horizontal lines. The leaf shows signs of age and wear.

Handwritten text in an ancient script, likely Pāli, on a palm leaf. The text is arranged in approximately four horizontal lines. The leaf shows signs of age and wear.

Handwritten text in an ancient script, likely Pāli, on a palm leaf. The text is arranged in approximately four horizontal lines. The leaf shows signs of age and wear.



Handwritten text in a cursive script, likely a historical document or manuscript. The text is written on a long, narrow strip of material, possibly wood or parchment, and is arranged in several lines. The script is dense and difficult to decipher due to its cursive nature and the angle of the strip. The strip has three circular holes punched along its length, similar to the strip above it.



[Faint, illegible handwriting in a cursive script, likely a historical or religious text, written on the strip of paper.]

Handwritten text on a long, narrow strip of aged paper, possibly a document or manuscript. The text is faint and illegible. Three circular holes are visible along the length of the strip.

Handwritten text on a long, narrow strip of aged paper, possibly a document or manuscript. The text is faint and illegible. Three circular holes are visible along the length of the strip.

Fragment of a palm-leaf manuscript strip, showing faint traces of text and three circular holes for binding.

Fragment of a palm-leaf manuscript strip with clear handwritten text in an Indic script, likely Grantha. The text is arranged in approximately 12 horizontal lines. The script is finely inscribed and appears to be a form of Sanskrit or a related language. The fragment includes three circular holes for binding.

Handwritten text on a palm leaf strip, likely in an ancient script. The text is arranged in several lines across the length of the leaf. There are three circular holes punched along the strip: one near the left end, one in the middle, and one near the right end.

Handwritten text on a second palm leaf strip, continuing the script from the first strip. The text is arranged in several lines. There are three circular holes punched along the strip: one near the left end, one in the middle, and one near the right end.

Handwritten text on a long, narrow strip of aged paper, likely a manuscript or document. The text is written in a cursive script, possibly a historical form of a South Asian language. The strip has two circular holes punched through it, one near each end, suggesting it was part of a bound volume or a chain of documents. The paper is yellowed and shows signs of wear and tear.

Handwritten text on a long, narrow strip of aged paper, similar to the one above. The text is written in a cursive script, likely the same language as the top strip. The strip has two circular holes punched through it, one near each end. The paper is yellowed and shows signs of wear and tear.

Handwritten Burmese script on a palm leaf manuscript strip, featuring two circular holes for binding. The text is arranged in approximately 10 horizontal lines across the length of the leaf.

Handwritten Burmese script on a second palm leaf manuscript strip, also featuring two circular holes for binding. The text is arranged in approximately 10 horizontal lines across the length of the leaf.

Handwritten text on a long, narrow strip of aged paper, likely a manuscript or document. The text is written in a cursive script and is arranged in several lines. There are two circular holes punched through the strip, one near each end.

Handwritten text on a long, narrow strip of aged paper, likely a manuscript or document. The text is written in a cursive script and is arranged in several lines. There are two circular holes punched through the strip, one near each end.

Handwritten Burmese script on a palm leaf manuscript strip, featuring two circular holes for binding. The text is arranged in approximately 10 horizontal lines across the length of the strip.

Handwritten Burmese script on a second palm leaf manuscript strip, also featuring two circular holes for binding. The text is arranged in approximately 10 horizontal lines across the length of the strip.

၅၅
၇၅
၈၅
၉၅

Handwritten Burmese script on a palm leaf, consisting of approximately 15 lines of text.

Handwritten Burmese script on a palm leaf, consisting of approximately 15 lines of text.

Handwritten Burmese script on a palm leaf, consisting of approximately 15 lines of text.

Handwritten Burmese script on a palm leaf, consisting of approximately 15 lines of text.

Handwritten text on a long, narrow strip of aged paper, possibly a document or manuscript. The text is written in a cursive script and is arranged in several lines. There are two circular holes punched through the strip, one near the left end and one near the right end.

Handwritten text on a long, narrow strip of aged paper, possibly a document or manuscript. The text is written in a cursive script and is arranged in several lines. There are two circular holes punched through the strip, one near the left end and one near the right end.

၅၅

၅၅
၅၅
၅၅
၅၅
၅၅

၅၅
၅၅
၅၅
၅၅
၅၅

၅၅
၅၅
၅၅
၅၅
၅၅

၅၅
၅၅
၅၅
၅၅
၅၅

၅၀

Handwritten Burmese script on the left side of the top palm leaf, consisting of approximately 10 lines of text.

Handwritten Burmese script on the right side of the top palm leaf, consisting of approximately 10 lines of text.

Handwritten Burmese script on the left side of the bottom palm leaf, consisting of approximately 10 lines of text.

Handwritten Burmese script on the right side of the bottom palm leaf, consisting of approximately 10 lines of text.

၈၈

Handwritten Burmese script on the left side of the top palm-leaf manuscript strip.

Handwritten Burmese script on the right side of the top palm-leaf manuscript strip.

Handwritten Burmese script on the left side of the bottom palm-leaf manuscript strip.

Handwritten Burmese script on the right side of the bottom palm-leaf manuscript strip.

Handwritten Burmese script on a palm leaf, consisting of approximately 12 lines of text.

Handwritten Burmese script on a palm leaf, consisting of approximately 12 lines of text.

Handwritten Burmese script on a palm leaf, consisting of approximately 12 lines of text.

Handwritten Burmese script on a palm leaf, consisting of approximately 12 lines of text.

Handwritten text on a palm leaf manuscript strip, featuring two circular holes for binding. The script is a form of Southeast Asian writing, likely Burmese or Thai, arranged in approximately 10 horizontal lines.

Handwritten text on a second palm leaf manuscript strip, also featuring two circular holes for binding. The script is consistent with the first strip, arranged in approximately 10 horizontal lines.

Handwritten text on a palm leaf strip, consisting of two columns of script. The script is a form of South Indian writing, likely Grantha or Tamil. The text is arranged in approximately four lines per column. Two circular holes are visible on the strip, used for binding multiple leaves together.

Handwritten text on a second palm leaf strip, also consisting of two columns of script. The script is consistent with the first strip. The text is arranged in approximately four lines per column. Two circular holes are visible on the strip, used for binding multiple leaves together.

Handwritten Burmese script on a palm leaf strip, featuring two circular holes for binding. The text is arranged in approximately 10 horizontal lines across the length of the leaf.

Handwritten Burmese script on a second palm leaf strip, also featuring two circular holes for binding. The text is arranged in approximately 10 horizontal lines across the length of the leaf.

Handwritten text in an ancient script, likely Tamil, on a palm leaf. The text is arranged in approximately 10 horizontal lines. There are two circular holes on the left side of the leaf, which were used for binding multiple leaves together.

Handwritten text in an ancient script, likely Tamil, on a palm leaf. The text is arranged in approximately 10 horizontal lines. There are two circular holes on the right side of the leaf, which were used for binding multiple leaves together.

Handwritten text in an ancient script, likely Tamil, on a palm leaf. The text is arranged in approximately 10 horizontal lines. There are two circular holes on the left side of the leaf, which were used for binding multiple leaves together.

Handwritten text in an ancient script, likely Tamil, on a palm leaf. The text is arranged in approximately 10 horizontal lines. There are two circular holes on the right side of the leaf, which were used for binding multiple leaves together.

Handwritten text on a long, narrow strip of aged paper, likely a manuscript or document. The text is written in a cursive script, possibly Burmese or Thai. The strip has two circular holes punched through it, one on the left and one on the right. The paper is yellowed and shows signs of wear and discoloration.

Handwritten text on a long, narrow strip of aged paper, similar to the one above. The text is written in a cursive script. The strip has two circular holes punched through it, one on the left and one on the right. The paper is yellowed and shows signs of wear and discoloration.

Handwritten Burmese script on a palm leaf fragment, featuring two circular holes for binding. The text is arranged in approximately four horizontal lines.

Handwritten Burmese script on a palm leaf fragment, featuring two circular holes for binding. The text is arranged in approximately four horizontal lines.

Handwritten Burmese script on a palm leaf fragment, featuring two circular holes for binding. The text is arranged in approximately four horizontal lines.

Handwritten Burmese script on a palm leaf fragment, featuring two circular holes for binding. The text is arranged in approximately four horizontal lines.

Handwritten Burmese script on a palm leaf fragment, featuring two circular holes for binding. The text is arranged in approximately four horizontal lines.

Handwritten Burmese script on a palm leaf fragment, featuring two circular holes for binding. The text is arranged in approximately four horizontal lines.

Handwritten Burmese script on a palm leaf fragment, featuring two circular holes for binding. The text is arranged in approximately four horizontal lines.

Handwritten Burmese script on a palm leaf fragment, featuring two circular holes for binding. The text is arranged in approximately four horizontal lines.

Handwritten Burmese script on the left side of the top palm-leaf fragment. The text is arranged in approximately four horizontal lines, written in a cursive style. Two circular holes are visible on the left side of the leaf.

Handwritten Burmese script on the right side of the top palm-leaf fragment. The text is arranged in approximately four horizontal lines, written in a cursive style. Two circular holes are visible on the right side of the leaf.

Handwritten Burmese script on the left side of the bottom palm-leaf fragment. The text is arranged in approximately four horizontal lines, written in a cursive style. Two circular holes are visible on the left side of the leaf.

Handwritten Burmese script on the right side of the bottom palm-leaf fragment. The text is arranged in approximately four horizontal lines, written in a cursive style. Two circular holes are visible on the right side of the leaf.

Handwritten Burmese script on a palm leaf manuscript strip, featuring two circular holes for binding. The text is arranged in approximately 10 horizontal lines across the length of the strip.

Handwritten Burmese script on a second palm leaf manuscript strip, also featuring two circular holes for binding. The text is arranged in approximately 10 horizontal lines across the length of the strip.

Handwritten text on a palm leaf strip, consisting of two columns of script. The script is a form of Southeast Asian writing, likely Burmese or Thai. The leaf shows signs of age and wear, with two circular holes for binding.

Handwritten text on a second palm leaf strip, also consisting of two columns of script. The script is consistent with the first strip. The leaf is similarly aged and has two circular holes for binding.

Handwritten text on a palm leaf manuscript strip, featuring two circular holes for binding. The script is an ancient form of a South Asian language, likely Tamil or Grantha, written in dark ink on the natural yellowish-brown surface of the leaf. The text is arranged in approximately four horizontal lines across the length of the strip.

Handwritten text on a second palm leaf manuscript strip, also featuring two circular holes for binding. The script is consistent with the first strip, showing a highly stylized and dense form of an ancient South Asian script. The leaf shows signs of wear and tear, particularly at the left end.

Fragment of a palm-leaf manuscript strip with two circular holes. The text is written in an ancient script, likely Tamil, and is arranged in approximately four horizontal lines. The left edge of the strip is heavily damaged and irregularly torn.

Fragment of a palm-leaf manuscript strip with two circular holes. The text is written in an ancient script, likely Tamil, and is arranged in approximately four horizontal lines. The left edge of the strip is heavily damaged and irregularly torn.

Handwritten text in an ancient script, possibly Tamil, on a palm leaf manuscript. The text is arranged in a single line across the length of the leaf. There are two circular holes visible, which were traditionally used for threading a cord to bind multiple leaves together. The leaf shows signs of age and wear, with some fraying at the ends.



PERPUSTAKAAN NASIONAL RI

NB

2507

